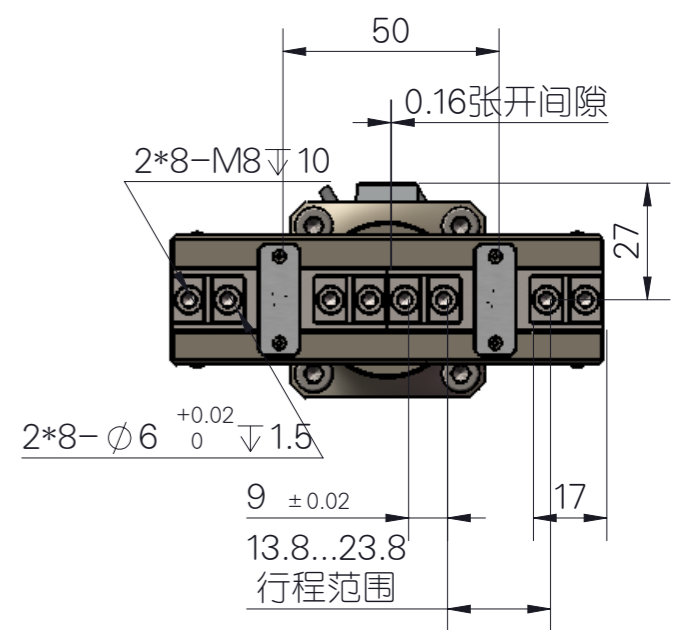
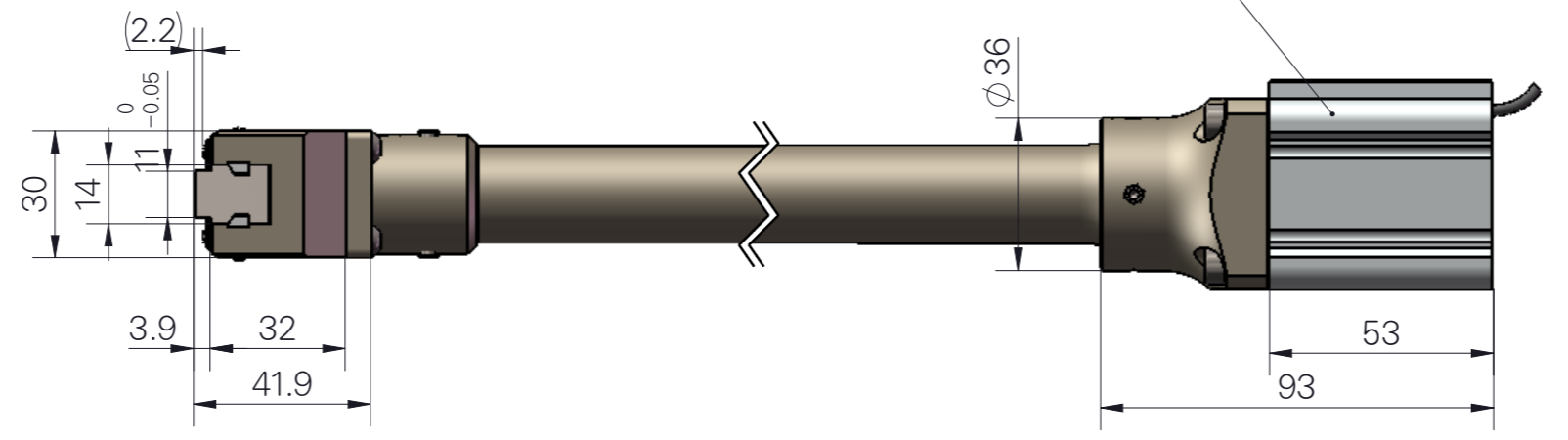
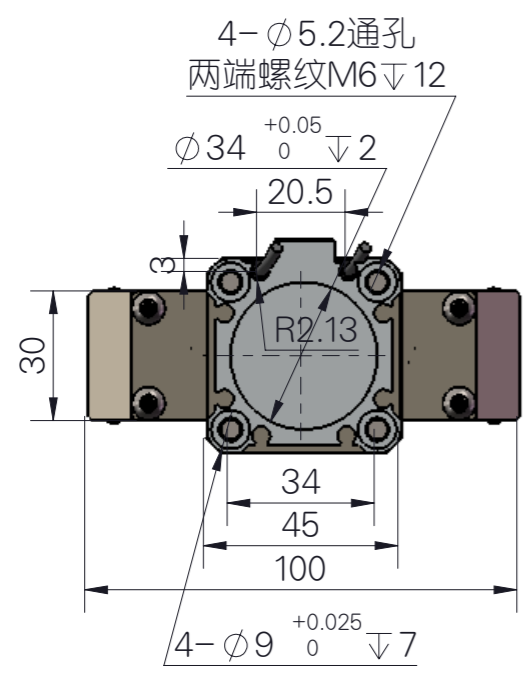




知识产权声明:
 本设计的结构和技术参数的知识产权归:
 浙江数源电子科技有限公司所有, 在未经
 本公司书面许可, 不得复制或仿制。
 如发现被复制或仿制将受到法律的严惩。

因改良等原因, 规格以及外观有所变更时, 不再另行通知, 敬请谅解。
 Without further notice if specification and exterior have been
 changed because of improvement thanks for your understanding

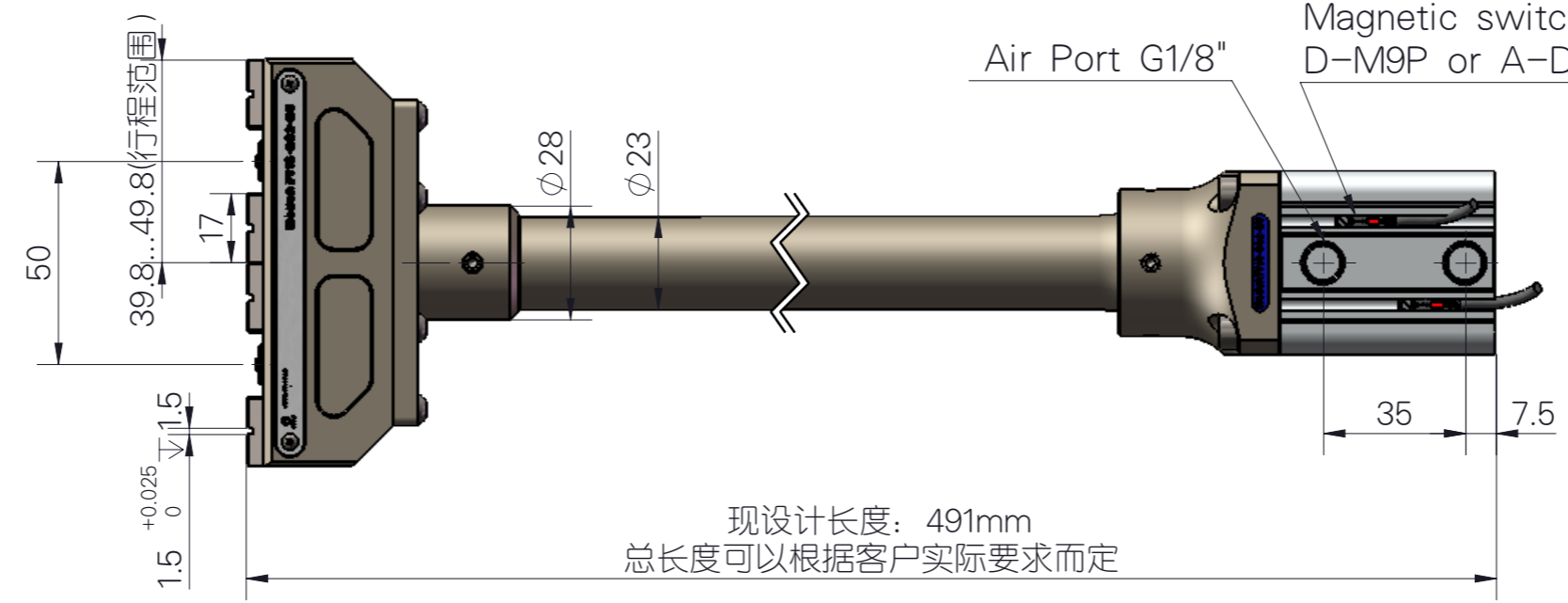
推荐的工件重量 (Recommended workpiece weight) : 2X1.05kg (max)



警告:

- 1.当操作夹爪工作时, 请人员务必远离夹爪和机器人的活动部位, 否则将会造成人身伤害的险;
 - 2.由于不同物件有其不同的摩擦系数, 当初次夹持工件时, 请在空旷场地进行试夹, 确保夹稳固后方可装机工作, 否则将会有跌落工件砸伤机器或人员的风险
- Warning:

- 1.When operating the gripper, please keep away from it Gripper and robot's moving parts, otherwise it will Risk of personal injury;
2. Because different objects have different friction coefficients, When clamping the workpiece for the first time, please try clamping in an open field. Ensure that the clamping is firm before the machine can work, otherwise it will There is a risk that falling workpieces may damage machines or personnel.



名称: 导轨款耐高温锻造平行夹爪-D32
 Name: Pneumatic parallel three claws
 型号 (Model) : FY13-D32-DU
 P:空气压力 (bar) P:Air Pressure(bar)
 L:到作用点距离 (mm) L:Exertion Length(mm): 滑块端部
 开闭范围 (Stoke) :10mm
 产品重量 (Weight):1.55kg (长491mm时)
 最大附件长度 (Max. length attach):60mm
 配管接口 (Fitting size):G1/8 “
 理论夹持力-开 (Gripping force :Open):459N/2=229.5N
 理论夹持力-闭 (Gripping force : Close):430N/2=215N
 开闭时间 (Closeing/Opening time):0.02/0.02sec
 重复精度 Repeat accuracy):0.02mm
 连续使用次数 (Continuation usage amount):60
 使用气压 (Operating pressure):3-8bar
 润滑 (Lubrication):不需要 (Needless)
 根据IEC60529标准安全防护:IP64
 所有数据在7 Bar时测量 (All data were measured at 6 Bar)
 重复精度: 连续动作100次以后的检测值
 After 100 consecutive strokes to end positions

随夹爪所配的附件清单:

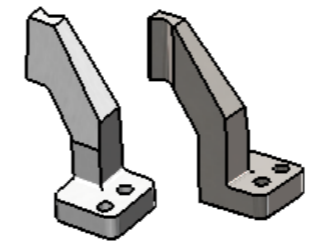
磁性开关型号
 D-M9P or A-D93
 or MMS22 (或其它)
 数量: 2
 (短款: 长度15)



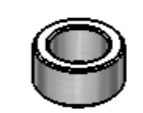
带节流阀的气管接头
 规格: G1/8 “
 进气管规格: 6X4
 数量: 2



直径8X长度100的夹持手指
 材质: H13耐热钢
 数量两副: 4 Pcs
 型式尺寸待定



手指安装定位套
 材质: GCr15
 数量: 8
 当手指采用开槽定位时
 取消该定位套



紧固件:
 不锈钢圆柱头螺钉
 M4X14-GB/T70.1
 数量: 8

紧固件:
 圆柱头螺钉:8.8级
 M5X75-GB/T70.1
 数量: 4